

CELEBRE **M**AGAZINE

WORLD

MIAMI · LONDON · DUBAI · HONG KONG · LUGANO · MONACO · MILAN · SINGAPORE · TOKYO · NEW YORK



Columbus Big Naan

Exploring
the essence
of luxury

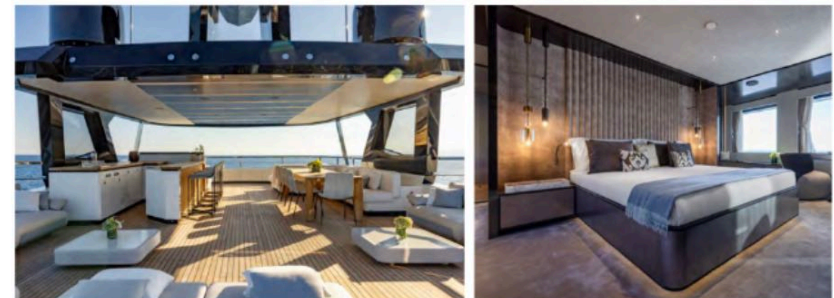


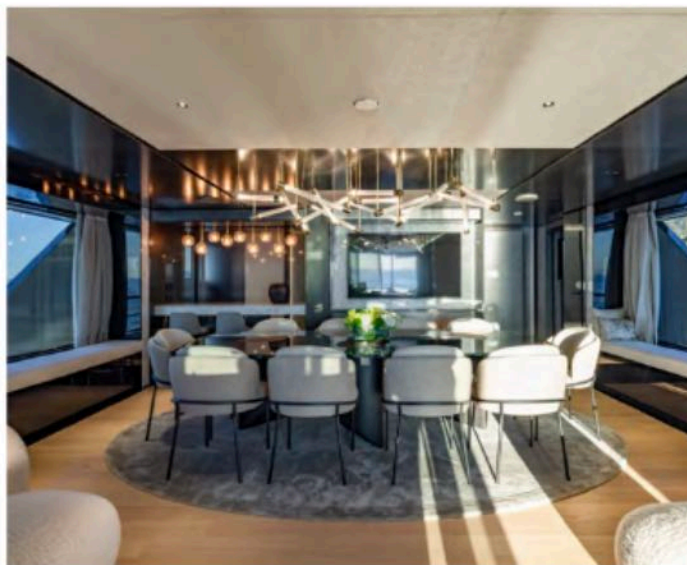
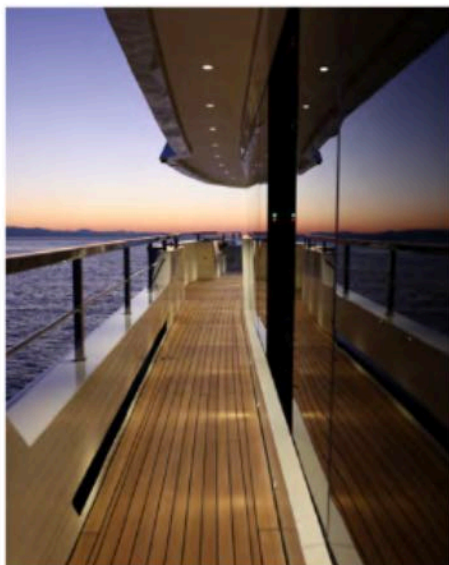
by Roberta Vanore

The latest jewel launched by Columbus Yachts, a brand within the Palumbo Superyachts Group, is an exclusive ocean-going explorer yacht, an Italian-crafted masterpiece designed to roam the seas in consummate style.



“**T** rue luxury is creating what no one has yet imagined.” This is the guiding ethos of Columbus Yachts, the Ancona-based shipyard specialising in fully customised superyachts, where exclusivity is conceived not as ostentation but as a harmonious fusion of beauty and functionality. This aesthetic vision takes shape in the Columbus Crossover 42 M/Y Big Naan, a 42-metre-long vessel with a beam of 9 metres and a draft of 2.6 metres, an exquisite floating work of art that redefines the meaning of travel, merging Italian craftsmanship with state-of-the-art technology. Designed by Hydro Tec, Big Naan is the inaugural vessel in the Columbus Yachts Crossover line. The steel displacement hull ensures impeccable stability, while the aluminium superstructure lends dynamism to the yacht's profile, its forward-projecting volumes evoking a spirit of permanent adventure. The most innovative feature is the lower-deck beach club with its spectacular glass-walled pool. With a depth of two metres and 17 cubic metres of seawater, it is arguably the largest pool ever installed on a yacht of this size. Light plays a vital role: sunlight becomes a living material, casting ever-changing reflections from dawn to dusk, creating a mesmerising emotional ambience. Natural light filters through the transparent pool walls, illuminating the fitness area below, which may be configured either as a Technogym-equipped gym or as a spa and massage room, according to the owner's preference. The interiors are by Milan-based design studio Hot Lab, renowned for its bespoke approach. The elegant main saloon showcases a palette of luxurious materials: marble, metal accents, velvets and soft fabrics. A sophisticated interplay of warm greys, beige and cream is punctuated by bursts of colour, such as a striking pop artwork framed in marble. The space is enriched with dark boiserie, marble panelling and a





micro-perforated metal ceiling fitted with contemporary lighting. Light tones, metallic details and a contrast of glossy and matte surfaces create a refined sense of depth. The saloon is complemented by the dining area, featuring a Minotti table, Eichholtz sofas, and Gervasoni pouffes, a relaxed lounge space with built-in window seating, a custom American bar, and a snack bar. The night quarters accommodate up to 11 guests across five ensuite cabins: the owner's suite and four guest cabins on the lower deck. Velvet headboards, custom lighting and Armani wallpaper overhead add an unmistakably refined touch.

The full-beam owner's suite, located forward on the main deck, features a king-size bed, walk-in wardrobe, writing desk, Amura armchair and a marble bathroom with a double-shower arrangement. Crew accommodation includes four twin cabins on the lower deck and a captain's cabin on the upper deck, ensuring optimal operational efficiency for a crew of nine. Outdoors, the three aft decks provide expansive open-air living areas. The aft cockpit, with drop-down bulwarks, can host water toys and a six-metre tender launched via a crane cleverly concealed within the bulwark. The upper-deck cockpit is furnished with sofas, Minotti seating and a large TV screen, with sliding doors that offer seamless indoor-outdoor flow. The vast sundeck, 12 metres long and 7 metres wide, crowning the upper deck is an open-air celebration of alfresco living and can accommodate up to 30 guests. Aft, a completely open sunbathing area invites total relaxation, while the forward section beneath the hardtop features a custom teak Roda dining table, bar with stools, a compact galley with grill and hot plate, refrigerators, a 360-degree rotating retractable TV and generous lounge seating, transforming the space into a captivating sky-lounge suspended over the sea. Propulsion is provided by two Caterpillar C32 AC-

The interiors are by Milan-based design studio Hot Lab, renowned for its bespoke approach. The elegant main saloon showcases a palette of luxurious materials: marble, metal accents, velvets and soft fabrics.

ERT engines (742 kW), delivering a top speed of over 14 knots and a cruising speed of 12 knots. With a range exceeding 5,500 nautical miles at 10 knots, the yacht is fully capable of long-distance ocean passages. Comfort at sea is ensured by two pairs of stabilisers, active both underway and at anchor. Two watermakers supply ten cubic metres of fresh water per day. The selective catalytic reduction (SCR) system complies with IMO Tier III emission standards, enabling navigation within marine protected areas. Compact yet versatile, Big Naan is a visionary, forward-thinking yacht, an impeccable synthesis of power, craftsmanship and elegance.