





ALL TOGETHER NOW

The 179ft Baglietto *C* is designed to accommodate every generation of one lucky family. *Kevin Koenig* reveals a fully custom yacht that offers the perfect balance of togetherness and privacy

PHOTOGRAPHY GIOVANNI MALGARINI

E

Everybody knows that blood is thicker than water, but perhaps it's true that blood is thicker *on* the water as well. The family that commissioned the 179ft Baglietto named C certainly seems to think so. The yacht was designed from the keel up to cater to the family's every yachting whim and is replete with customizations that make her an excellent fit for the clan, no matter the generation or interest. But completing such an all-encompassing build was no easy task. Luckily the owners found a team of brokers, designers and builders who were able to make their dream come to life.

In Italy, it is common to refer to the person who ushers a project along to life as *il padre* – the project's father. Many hands worked together to complete C, but if one had to point to a single padre, you'd be hard-pressed to find someone more deserving than Fernando Nicholson, senior sales broker at Camper & Nicholson. The quadrilingual Nicholson was born into the brokerage business and now runs the company's new Miami office. His expertise has been gleaned from 35 years in the industry and he was able to put it all to good use with this Baglietto. He had to – he was effectively working from scratch. "Nobody knew about this boat," Nicholson says. "We designed it from nothing. It came from a brand-new platform. But I was fortunate because I was working with a long-term client of mine and they have deep boating knowledge. So they knew what they wanted and my job was to deliver that to them. And frankly I think it all worked out incredibly well."

What the client needed, first and foremost, was a vessel that could offer enough space and privacy for the family members to pursue their respective on-the-water passions. And, according to Nicholson, that meant the project's requirements were four-fold.

"First, we knew we wanted to accommodate 17 people," he says. "Second, we needed a shallow draft.

ADDITIONAL PHOTOGRAPHY: SCOVAVENTO





“We designed the boat from nothing. It came from a brand new platform, but I was fortunate I was working with clients with deep boating knowledge”

93



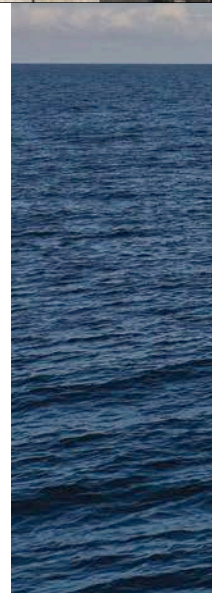


Left: an alfresco dining area on the aft end of the bridge deck has two separate tables that gives the baby boomers space away from the millennials. Below: the sundeck, likewise,

seats many guests across two tables. Opposite page, top: The main deck has two large L-shaped couches overlooking an infinity plunge pool at the transom (bottom)

C is for Caterpillar

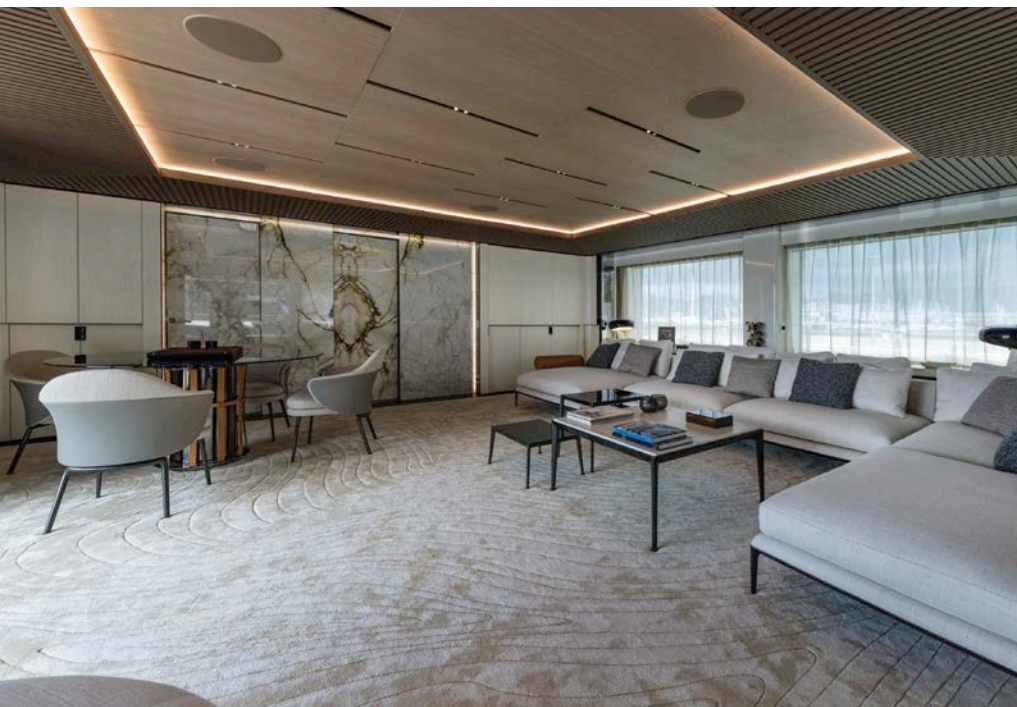
When it comes to performance, *C* has some impressive numbers that pair well with her thoughtful design. "She's an aluminum boat," says Fernando Nicholson from Camper & Nicholson's, "so we were focused on speed. We chose Caterpillars because they give us excellent power without taking up as much space as some of the other big engines. And that extra space, of course, can be used for people, which was a concern considering the amount of people we expect to have aboard." With twin 1,925hp Caterpillar C32 ACERTs, *C* has a top speed of 15.5 knots. She can also cruise at 12 knots for 4,500 nautical miles. That's enough range to take the yacht from Miami to Viareggio on a single tank of fuel.





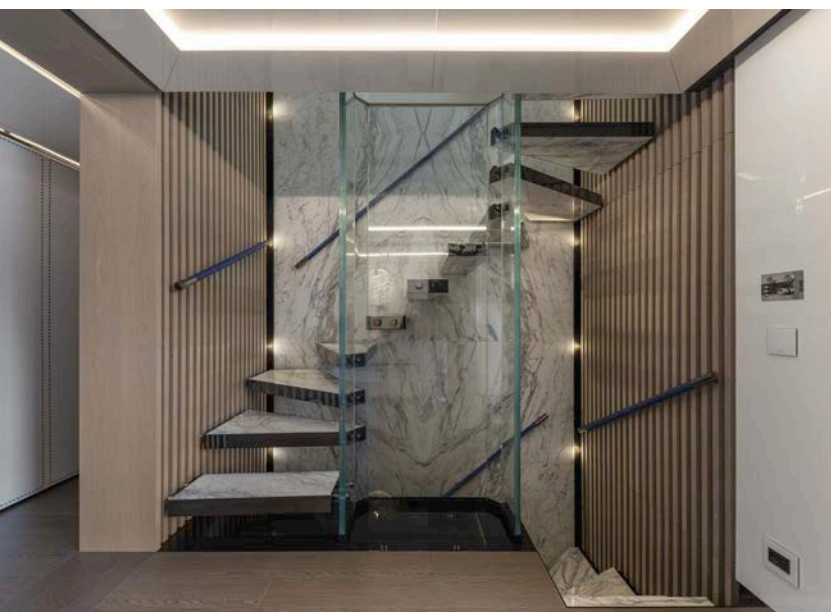
“We had some dreams of doing crazy things. We chose Horacio Bozzo because it’s well known that he can make crazy things work out beautifully”



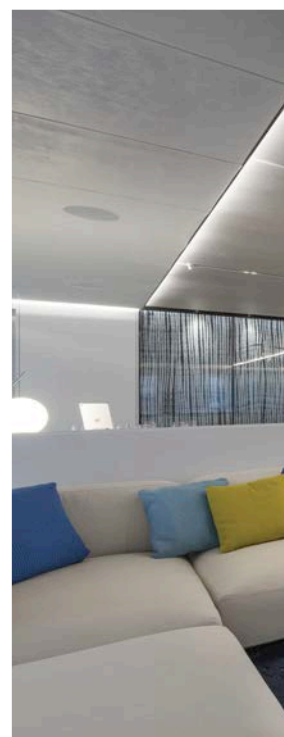


Left and below:
designer Enrico Lumini
opted for a mature
sense of glamor in the

bridge deck common
areas, using cool
colors, rich materials
and modern furniture



The bridge deck salon
(above) includes a
card table, which
speaks to the fact that
it was designed for
the older generation.
The main deck,
meanwhile, features
more playful decor for
the youngsters (below
and bottom right)





Third, the beach club had to be outstanding. And lastly, we wanted two master cabins. The patriarchs of the family are brothers so that last point was important.”

To ably incorporate all of the owners’ requirements, Nicholson reached out to the much sought-after Viareggio-based nautical designer Horacio Bozzo. “We had some dreams of doing crazy things,” Nicholson says with a chuckle, “and sometimes crazy things don’t work. But we chose Bozzo because it’s well known that he can make crazy things work out beautifully.”

Bozzo attacked the project’s requirements with his trademark creativity and flair. “I knew from the start that this Baglietto was going to be something quite different, and a large part of that comes from the amount of people the family needs to keep comfortable,” the designer says. “One piece of the design that flowed from this need – and that will be immediately obvious to anyone who steps aboard – is that there are four staterooms on the forward portion of the main deck. There are twin mirroring masters for the brothers, and then two more mirroring VIPs for

“We wanted a fresh feel in the main salon so we used lots of blues and whites. We replicated the sea with the color scheme. You can relax here and nothing feels uptight”

other family members. This arrangement is rather unusual for a yacht of this size, but it works well for a few reasons. One, there’s no argument over who gets the better cabin because there are multiple versions of the same one. And two, the main deck has enormous windows, so the staterooms benefit from all the natural light that they let in. You’re never going to feel closed in in those staterooms, that much is for sure!”

The cabins have another design advantage that Nicholson points out with pride. “The walk-in closets and the make-up areas are at the entrance to the cabins,” he says. “So when you step into the cabin you step into a sort of a mini lobby. No one wants to step directly into the bedding area. You have to walk well into the stateroom before getting to the bed. And this was inspired by privacy.”

Privacy is key on board this Baglietto. “Keeping guests and crew as separated as possible was a tenet of the design, so that the crew can work with no interference,” Bozzo says. “With the four large cabins on the main deck, it worked out quite well in that regard, because the galley is down below, and we use a dumb waiter to help with service, so this way, nobody is ever in anyone else’s hair. The flow aboard the yacht, the way people can move through it, is nearly effortless.”

Nicholson concurs. “I’ll tell you something else, the room for the crew on board is just astonishing. We are expecting to have 13 crew members and we are also expecting them to be very happy – which is good because when the crew is happy it becomes much easier to keep the owners happy. The yacht has six [bunk] cabins plus one single cabin for the captain on the bridge deck. They’re all very spacious and state of the art – they spare nothing.”

The owners also wanted to spare no destination, and the Bahamas is a particular favorite. But with a yacht this big, that age-old Bahamas conundrum was sure to arise: what to do about the draft in such a shallow destination?





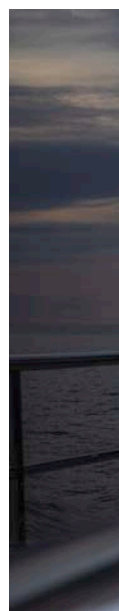
The main deck cabins (right) are elegant and cozy, dressed in oak and titanium with gold leaf accents, while the lower deck's cabins are kid-friendly (left and bottom left)

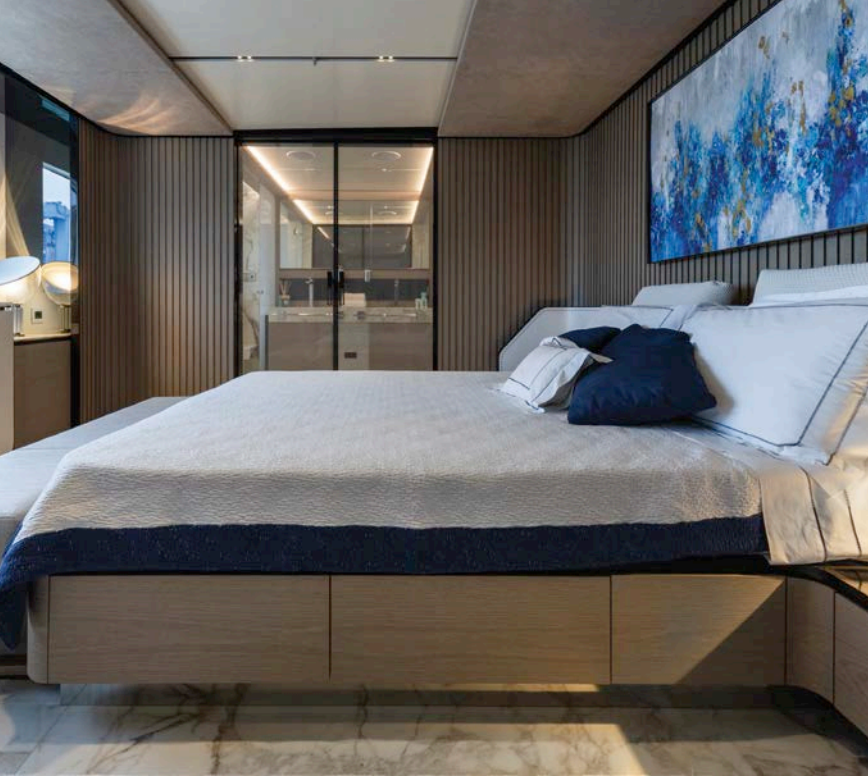


The answer lay with the yard. While steel is a common build material for the hull of a yacht in this size range, Baglietto recommended something a bit less obvious. “The hull and the superstructure are aluminum,” says Andrea Lavagnino, project manager at Baglietto. “We knew the boat would displace 900 gross tons with the amount of volume needed for the family. And if you [build] that with steel, which is so dense, you’ll draw three meters [10ft] easily. So you can forget the Bahamas. But with aluminum, we were able to make the beam wide at 10.4 meters, which helped us draw 2.6 meters. [The shallower draft] opens up a lot of top-notch cruising grounds that the family can enjoy.”

The aluminum and wide beam also give the vessel exceptional height, which translates to some exceptional entertainment spaces. “The verticality of the hull space offers so much headroom,” says Hot Lab’s Enrico Lumini, who did the interiors. “It doesn’t feel like a 54 [meter]; it feels like a 64.”

Lumini points to the yacht’s beach club as one beneficiary of its stature. “The beach club is one of my favorite parts of this yacht. It’s a bit unusual on a boat this size to have a beach club on the exact same level as the swim platform, but we were able to do that because the boat’s height is higher than normal. Plus, there are three huge openings to the beach club area to let in sea breezes and light. Also, what’s incredible about this deck is that it can transform into a gym, sauna or massage room. It’s so versatile, and that’s exactly how the family wanted it, because they all have different interests and different desires when they are on the water.”



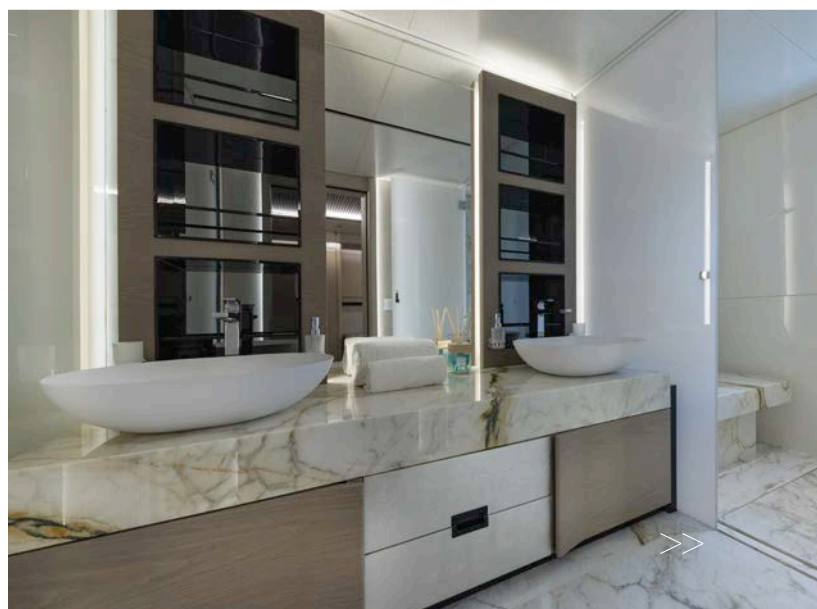
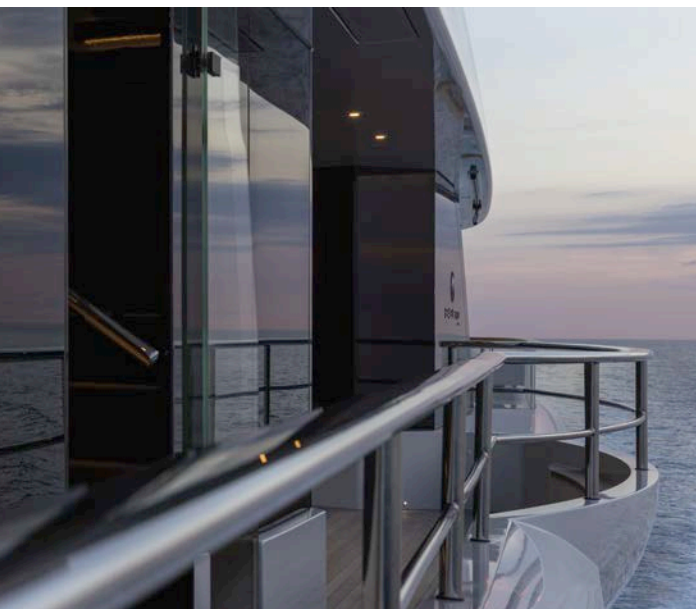
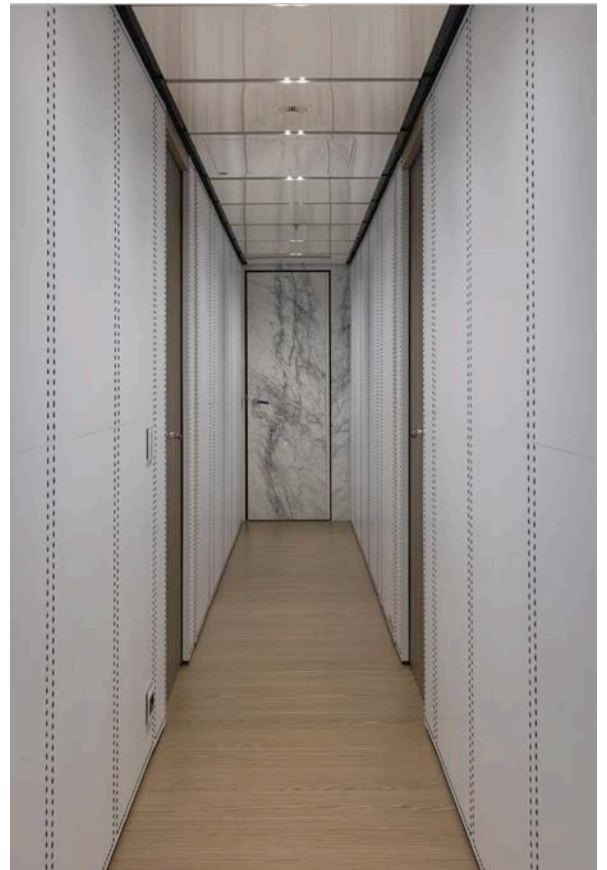


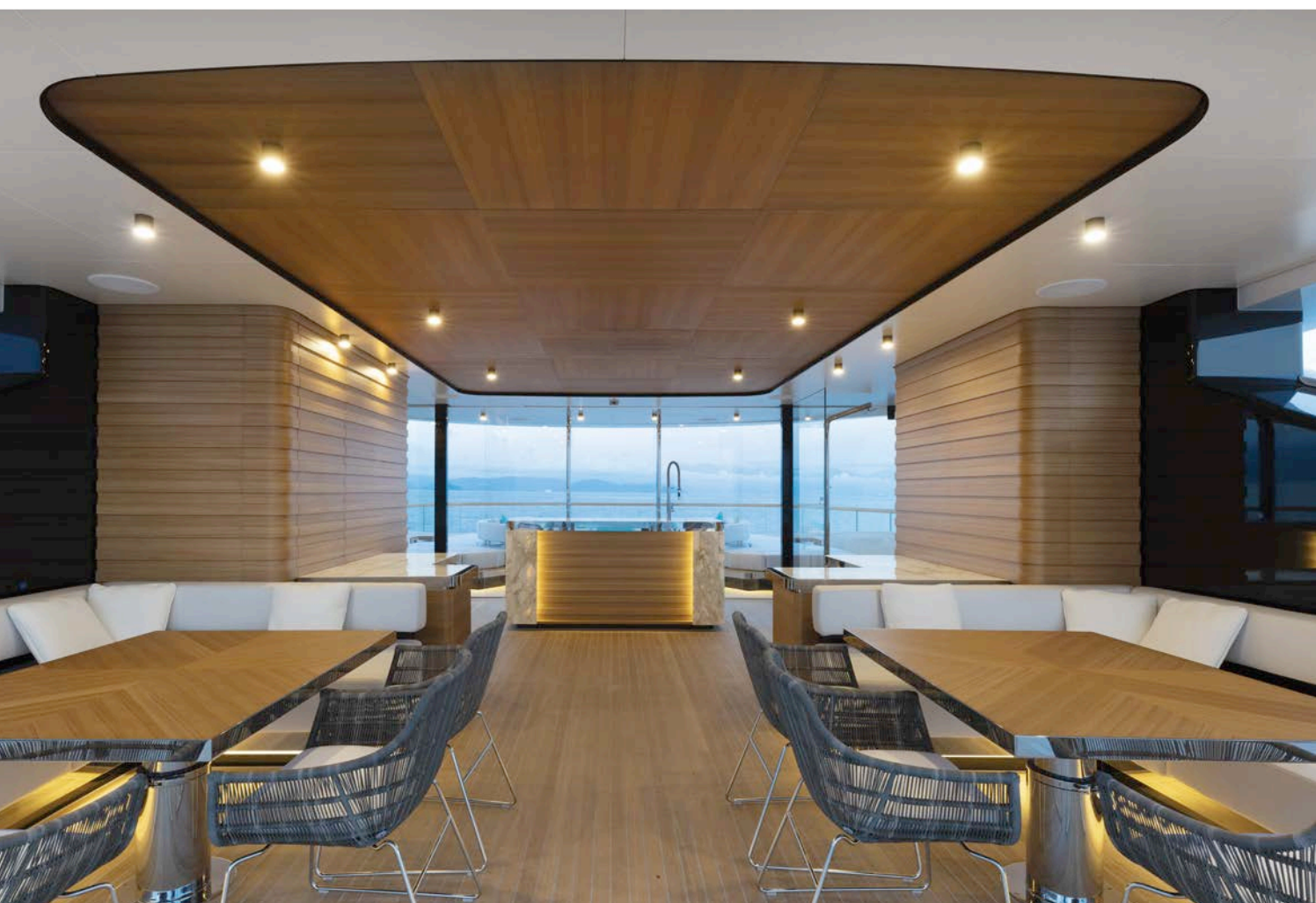
“There will be no argument over who gets the better cabin because there are multiple versions of the same one”

The necessity for variety plays out in other ways in the yacht’s interior. The cabins, for example, have drastically different feels. “On the main deck, in the ‘adult’ cabins, as it were, the design is elegant and cozy,” Lumini says. “We used mainly oak and titanium with some gold leaf accents. It’s all very chic, and of course private, with the secluded entrance ways.”

However, the children’s rooms required a different, more playful touch. “Probably my favorite part of the lower accommodation is that in one of the cabins we have a chalkboard wall where the children can write and draw and it easily washes off,” Lumini says. “Also, the washbasins on that level are a little bit lower to accommodate shorter legs, and all the materials are color- and kid-resistant.”

The age differences play out in the common entertainment areas as well. The aft end of the main







The sophisticated sundeck has a wet bar amidships (right) that ably serves the chic covered area (below and left) as well as the outdoor space forward (top left) with its

brehtaking vistas. Lumini cites the yacht's marble as one of the driving forces behind its individuality. Above: the bridge aft deck's dining tables each expand to seat 10



“There are times when the whole family will want to be together, and for that we have a beautiful sundeck”



Opening to the sea on three sides, the beach club is a versatile space that benefits greatly from the vessel's unusual height



deck has a salon that is meant for the younger generation, both children and adults. "It's for daytime play," Lumini says. "We wanted a fresh feel there, so we used lots of blues and whites and white oak for wood. We meant to replicate the sea with the color scheme. You can relax here, and nothing feels uptight. It's a great place to hang out on a couch and watch your children play - Flexform and Paola Lenti were the main brands we used here to get the proper feeling."

However up one flight of steps, on the bridge deck, things get a bit more sophisticated. "The upper deck is dedicated to the adults and is much more glamorous," Lumini says. "The tones are richer; the marbles and woods are very elegant. There's a card table and a projector for movie night. Everything up there feels a bit more mature. It's where the grownups can go play after the kids are all put to bed."

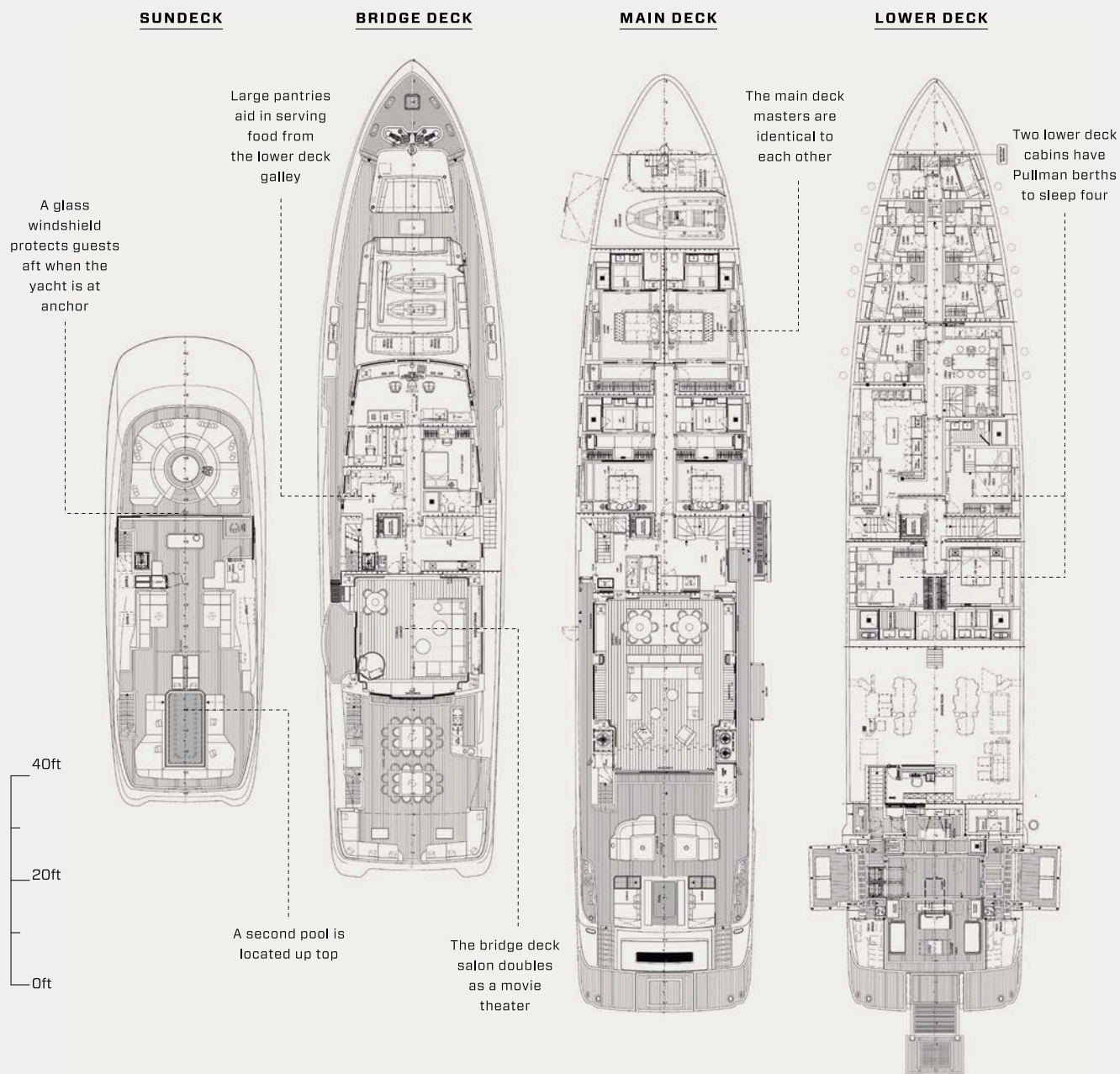
But what about when the whole family wants to be together? Surely if they're all on the same boat, they won't be segregated by age the whole time? "Of course there are times when the whole family will want to be together," Lumini says. "And for that we have a beautiful sundeck at the very top of the boat. It's totally open, great for sunshine and really feeling alive while you're at sea. It's a sort of mix of two identities - sophisticated and fun. The idea was for the space to be used by the entire family. It's got lounges, a bar and plenty of seating. Everyone can be up there and have their own little spaces, but still be together. And that's what was important to us as a team, and them as a client and a family."

If you're sensing a theme here, it's by design. The family that plays together, stays together. ■



C

BAGLIETTO



LOA 179' 2"
LWL 171' 4"
Beam 34' 1"
Draft 8' 6"
Gross tonnage
 901GT

Engines
 2 x Caterpillar C32
 ACERT, 1081 kW
Speed (max/cruise)
 15.5/12 knots
Range at 12 knots
 4,500nm

Generators
 2 x 150kW Caterpillar
Fuel capacity
 29,323 gallons
Freshwater capacity
 6,340 gallons
Tenders
 Williams Jet Tender
 454; 38' Fjord Express

Owners/guests 12
Crew 13
Construction
 Aluminum hull and
 superstructure
Classification
 Lloyd's Register 100 A
 1 SSC yacht Mono G6,
 [+] LMC; UMS; LY3

Naval architecture
 Horacio Bozzo Design
Exterior styling
 Horacio Bozzo Design
Interior design
 Enrico Lumini/Hot Lab

Builder/year
 Baglietto/2020
 La Spezia, Italy
 +39 0187 59831
 sales@baglietto.com
 baglietto.com