

Vacht première



N°27

THE INTERNATIONAL QUARTERLY OF 100' PLUS YACHTS

EUR 19.00 / USD 19.99 / GBP 13.50 / CHF 29.00 / CND 20.99



4 197293 519008

ISSN 2240-2608



Mondo Marine M50

by Mondo Marine with Hot Lab Yacht & Design

After publishing a full portrait in our last issue (No. 26) of the magnificent Okko, the yacht launched recently by Mondo Marine, in this issue we now present an innovative offering chosen from the numerous new proposals from the famous Italian shipyard. Named Mondo Marine M50, the new design was presented last year, first in a world preview in Monte Carlo at the Monaco Yacht Show, then in Fort Lauderdale at the International Boat Show.

This attractive design concept was created in an exclusive intensive collaboration with Italian firm Hot Lab Yacht & Design, which devised both the exterior design and the interior layout, and is currently working on solutions for the interior design. Meanwhile the naval architecture and engineering, as with all the Italian shipyard's most recent projects, were developed by Mondo Marine Engineering's in-house team, including the technical, structural and hydrodynamic aspects.

The vessel is designed to have a semi-displacement hull, and construction using light aluminium alloy for both the hull and the superstructure. Thanks in part to the lightness of the materials used and the careful distribution of the spaces, the vessel's gross tonnage is below 500 GT. The classification standard adopted is that of the ABS (American Bureau of Shipping) register – Maltese Cross A1 Commercial Yachting Service AMS (E).

In terms of size, the motor yacht's hull will have a length overall of 49.20 metres, equivalent to 161 feet 5 inches, and a beam overall of 9.00 metres, equivalent to 29 feet 6 inches, while under full load the yacht's maximum draught will be 2.60 metres, or 8 feet 6 inches.

The engine room is intended to contain two MTU V12 4000 M73 engines, each with maximum power of 2,575 BHP / 1,920 kW supplied at 1,970 rpm. ➤

The look draws on some of the yard's traditional compositional elements, matching them with new stylistic solutions specially conceived to render the form of the motor yacht more fluid and linear.







On the facing page: the stern incorporates an extensive beach area hidden by a folding hatch that also conceals the access staircases from the swimming platform to the aft deck.

In terms of performance, the motor yacht should reach a top speed of 19 knots and be able to maintain a fast cruising speed of 17 knots.

At the economy cruising speed of 12 knots, the yacht's range is estimated to be over 3,500 nautical miles. This is also partly thanks to the fuel tanks, which will be able to hold a total of 80,300 litres, equivalent to 21,244 US gallons, while the freshwater tanks will be able to hold a total of 11,800 litres, equivalent to 3,122 US gallons. The innovative design of the Mondo Marine 50M, laid out over three decks plus the sun deck, draws on the compositional elements traditionally used by the Italian shipyard, but accompanies them with new stylistic solutions specially devised to make the motor yacht's shape more fluid and linear in its proportions. From the very first glance at the renders, the viewer's attention is immediately captivated by the steep angle of the aft section, which gives the hull a sharp rake forward. In addition, the stern incorporates a beach area, which is unique in terms of size compared with similar areas on other vessels of the same size. This is hidden by a folding hatch which also conceals the two access staircases from the swimming platform to the main deck. With its high visual impact, this stylistic solution creates an overall look characterised by an impression of uninterrupted volumes fully consistent with the sober classical look of the external lines.





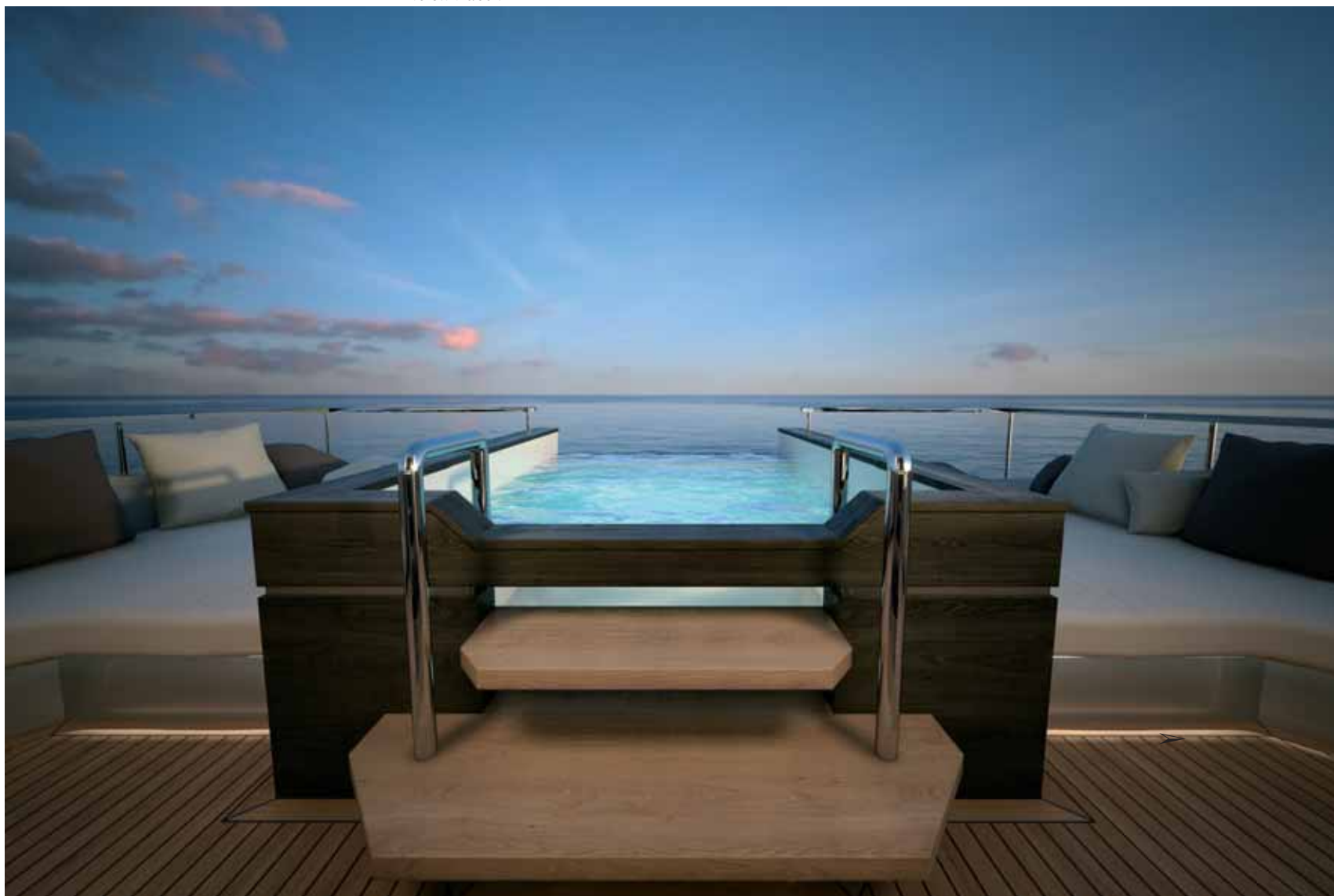
Mondo Marine M50

The new motor yacht stands out for the care taken with the various design aspects of the external areas, which are extremely extensive and particularly functional in terms of livability.

Details typical of cars, which have always been distinctive features of Hot Lab's style, are visible for example in the design of the aft fairleads, while the garage, located in the starboard wall of the vessel, houses a large tender. The route from the aft wheelhouse to the yacht's interior runs via the central gangway dividing the two large sun decks, and is marked out by a large sunbathing and lounge area with large sofas as well as its overall appearance, which successfully evokes the generous spaces typical of an open sports vessel. The full-height windows are placed to correspond to breaks in the hull and run along much of the length of the main deck, creating a chiaroscuro-type interplay of solids and voids. At the same time, they give more light to the corresponding interiors, creating a highly stimulating effect hinging on a constant direct dialogue with the surrounding environment outside.

Jacob Herzog

▼ The sun deck

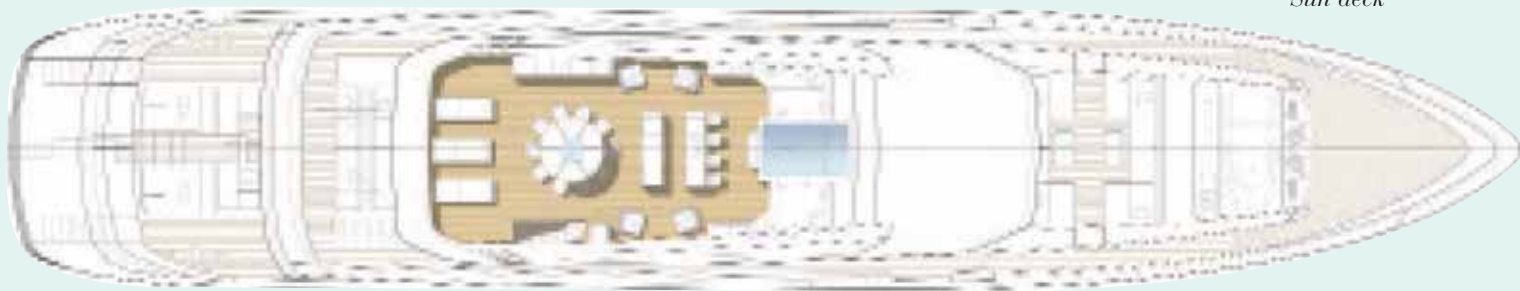


▲ The upper deck ▼ The main deck

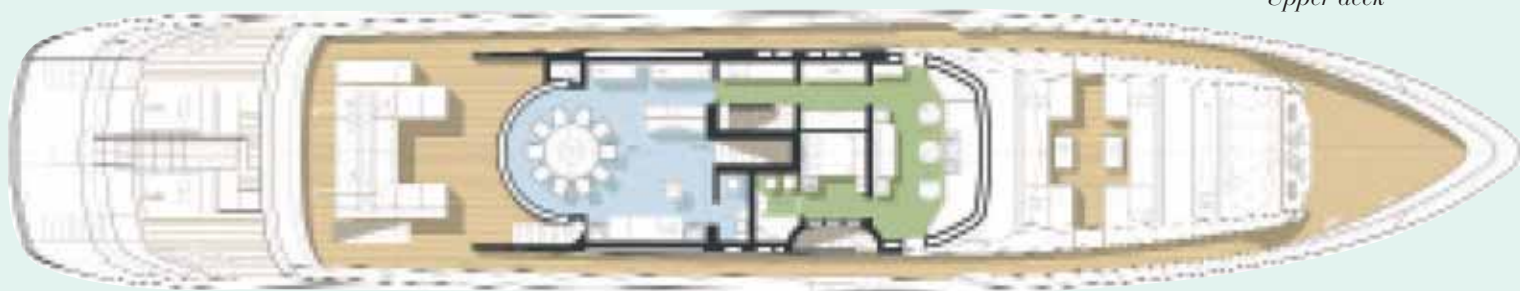




Profile



Sun deck



Upper deck



Main deck



Lower deck



Mondo Marine M50

On the facing page, one of the proposed layouts available; in every case the garage is located in the starboard wall of the vessel and can house a large tender.



| TECHNICAL SPECIFICATIONS | |
|--------------------------|---|
| Hull | Aluminium |
| Superstructure | Aluminium |
| LOA | 49.20 m / 161'5" ft |
| BOA | 9.00 m / 29'6" ft |
| Draught | 2.60 m / 8'6" ft |
| Maximum speed | 19 knots |
| Cruising speed | 17 knots |
| Range at 12 knots | 3,500 Nautical miles |
| Fuel | 80,300 litres / 21,213 US gallons |
| Fresh water | 11,800 litres / 3,117.23 US gallons |
| Main engines | 2 x MTU 12V 4000 M73 |
| Maximum power | 2 x 2,575 HP at 1,970 rpm |
| Displacement | - 500 GT |
| Classification | ✠ A1 Commercial Yachting Service ⓔ ✠ AMS LY2 Compliance |
| Naval design | Mondo Marine Engineering |
| Design exterior | Hot Lab Yacht & Design |
| Shipyard | Mondo Marine S.p.A. www.mondomarine.it mondomarine@mondomarine.it |